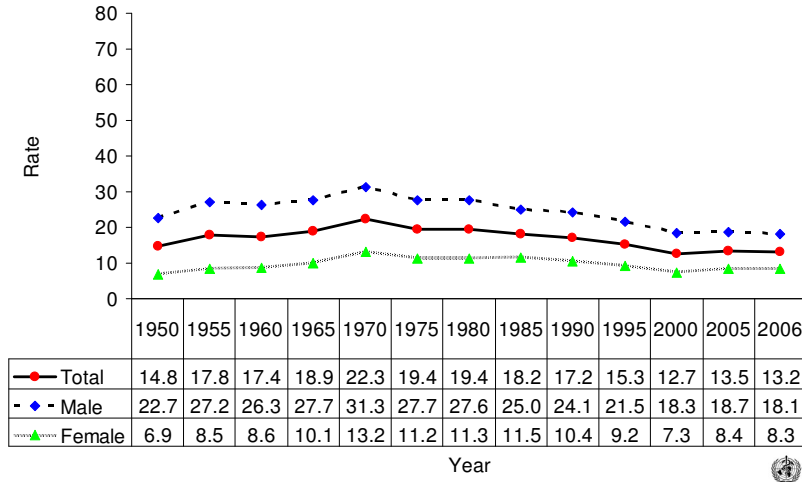
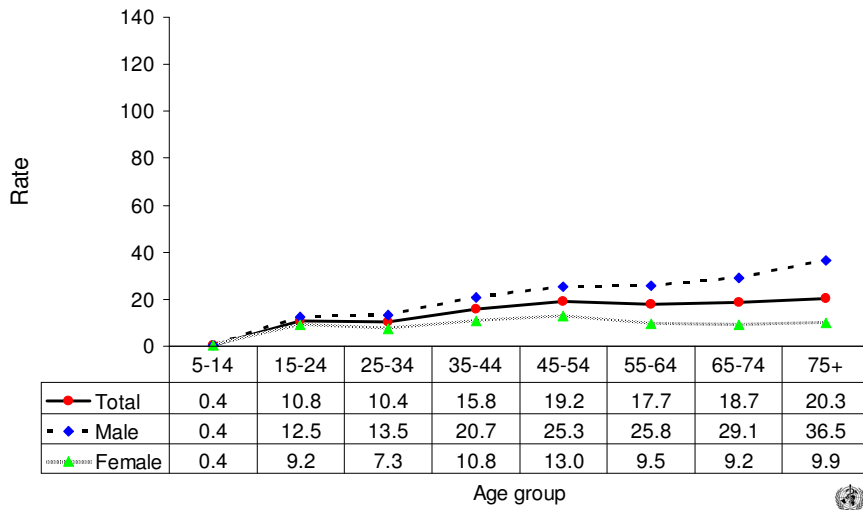


Suicide rates (per 100,000), by gender, Sweden, 1950-2006.



Suicide rates (per 100,000), by gender and age, Sweden, 2006.



Number of suicides by age group and gender. SWEDEN, 2006.

Age (years)	5-14	15-24	25-34	35-44	45-54	55-64	65-74	75+	All
Males	2	73	79	135	149	157	108	114	817
Females	2	51	41	68	75	57	37	48	379
Total	4	124	120	203	224	214	145	162	1196